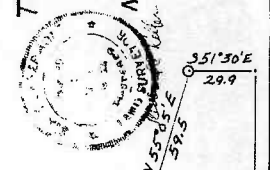


LEGEND
 O IPS = IRON PIN SET
 O IPF = IRON PIN FOUND
 O SPF = STONE PILE FOUND
 — = PROPERTY LINE
 — = LOT LINE
 x x x x = WIRE FENCE
 O O O O = STONE WALL
 222 = ORIGINAL TOWN LOT 22
 THE 2ND DIVISION
 ROW = RIGHT OF WAY

COMPASS AND STADIA SURVEY BY P. BIGELOW, G. TOWNE
 TRANSIT AND STADIA SURVEY BY R.C. KELLE ASSISTED BY P. BIGELOW AND A. CULVER AUGUST 1967
 TRANSIT AND TAPE SURVEY BY W.B. LOWE ASS BY M. BUENS AND A. CULVER DECEMBER, FOR RIGHT OF WAY
 LINES WITH BEARINGS EXPRESSED IN DEGREE AND FRACTIONS THEREOF BY COMPASS AND STADIA
 LINES WITH BEARINGS EXPRESSED IN DEGREE AND MINUTES AND DISTANCES TO THE NEAR FOOT BY TRANSIT AND STADIA
 LINES WITH BEARINGS EXPRESSED IN DEGREE AND MINUTES AND DISTANCES TO THE NEAR 0.05 FOOT ARE BY TRANSIT AND TAPE
 BEARINGS ARE REFERRED TO A LINE WHOSE BEARING IS MAGNETIC AS OF 1967
 TOWN HIGHWAY NUMBERS PER VT DEPT OF HIGHWAYS MAP OF MORETOWN DATED 1961
 REVISED 1961
 ALL LINES IN WOODS MARKED BY TREES BLA: MAPPED BY G. TOWNE 5 FEBRUARY 1974

AREA ~ 107 ACRES ±
 TITLE SOURCE:
 THE LAIRD PROPERTIES NEW ENGLAND LAND SYNDICATE FROM WARD LUMBER COMPANY INC 20 DEC. 1968 BOOK 30 PAGE 100

THE LAIRD PROPERTIES
NEW ENGLAND LAND SYNDICATE
PARCEL 24B
MORETOWN, VERMONT FEBRUARY 1974
 BY KELLER AND LOWE INC. WATERBURY VERMONT



SCALE ~ 1 INCH = 200 FEET
 12/2-50